

HYDROline PRO F900

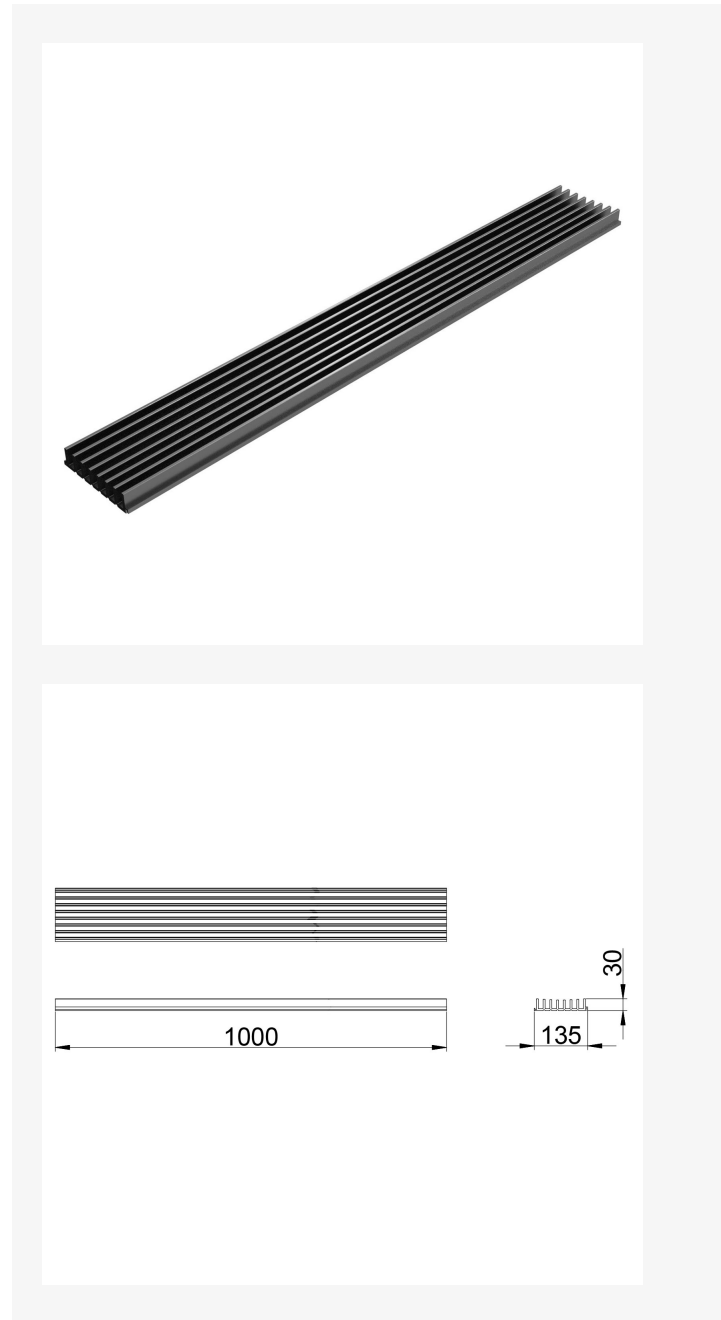
PRODUCT DATA

Article number	6803000041
Loading class	F 900
Nominal width	135 mm
Construction length	1000 mm
Construction height	30 mm
Type of product	Typ I
Type of element	Basiselement
Weight	ca. 4 kg

DETAILED INFORMATION

HYDROLINE PRO

- Ideal for terraces, underground car parks, balconies and high wheel loads
- Concave arrangement of the bars for optimum drainage of water even on low gradients
- Nominal width can be extended: the channel can be hooked in at the side, allowing the nominal width to be extended as required
- Powder-coated in RAL 9005 (deep black)

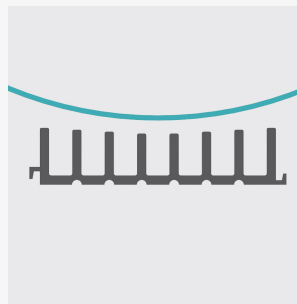


HYDROline PRO F900

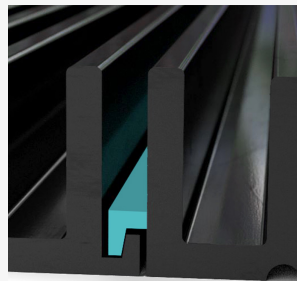
DETAILED INFORMATION



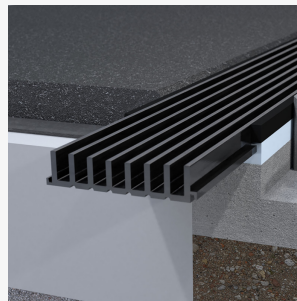
Ultra-flat



Concave arrangement



Nominal width expandable



TYPE I