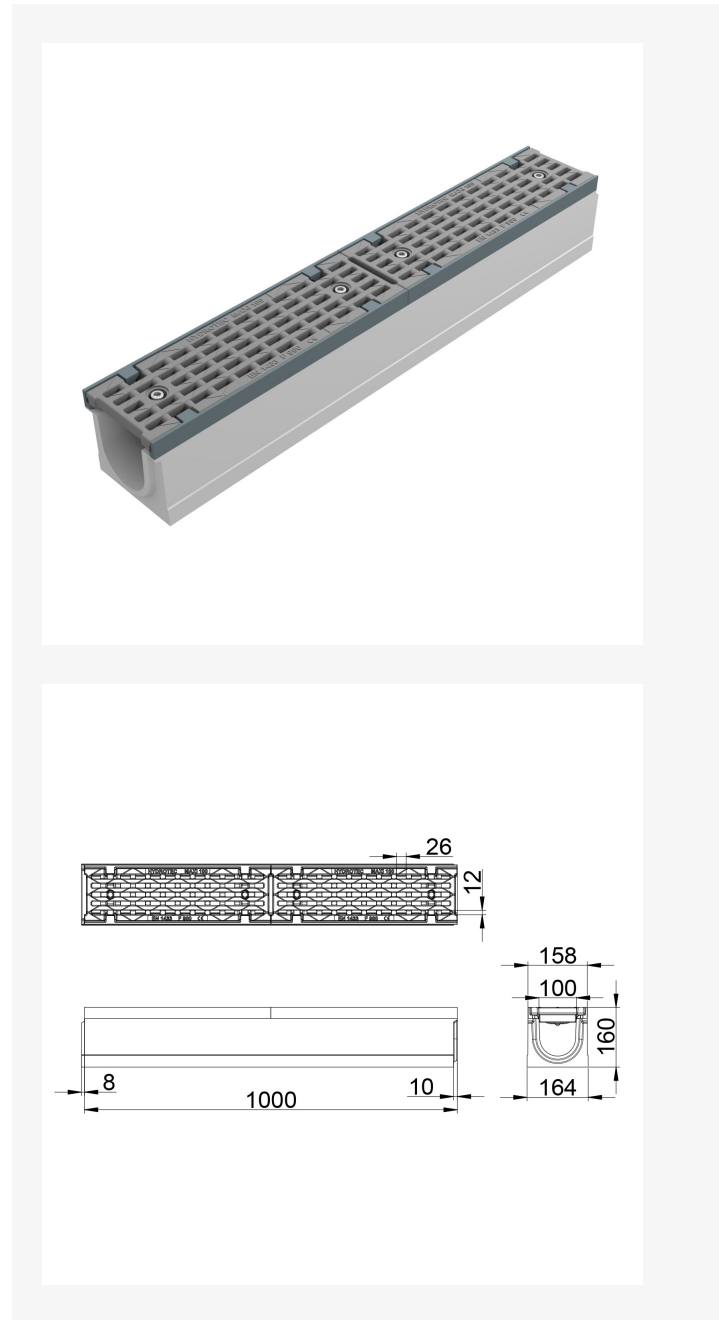


PRODUCT DATA SHEET

MAXI F1 100 F900

PRODUCT DATA

Article number	611600001
Loading class	F 900
Nominal width	100 mm
Construction length	1000 mm
Construction height	160 mm
Type of product	Typ M
Type of element	Basiselement
Weight	ca. 52 kg
Inlet cross-section	512 cm ² /m
Pieces per pallet	24 Stk.



DETAILED INFORMATION

CHANNEL BODY

- pressure-resistant concrete C35/45
- with ductile iron edge protection
- connecting profiles for precise fit

GRATING

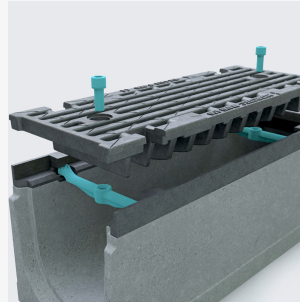
- Longitudinal slotted grating
- Longitudinal safety catch
- Made of cast iron

LOCKING

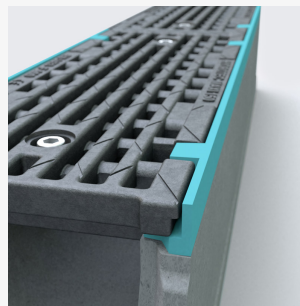
- Screwed locking mechanism with two rounded screw bolts per metre and screw lock for a firm hold of the grating in the lower body
- locking protection caps on the screws to protect against dirt

MAXI F1 100 F900

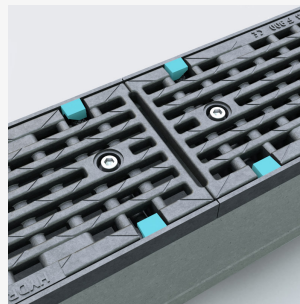
DETAILED INFORMATION



Special locking system



Edge protection



Longitudinal restraints



High load capacity